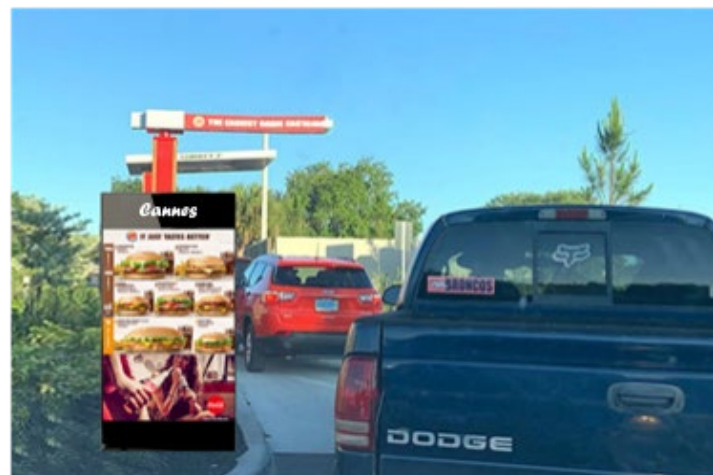


Digital Menu Board



Digital Signage Board



### Features

**LED Screen size :** W 960mm (37.8") x H 1,440mm (56.7")

**Chassis :** W 960mm (37.8") x H 2,040mm (80.3") x T 140mm (5.5")

Outdoor All weather proof High brightness 6,000 nits including high end environmental automatic light sensor. Narrow Pitch 3.3mm

Full Waterproof IP65, Vandal proof, No bezel (Neat design), Front service

All in One including controller. Just plug in, picture displays  
Connect upto 8 units side by side to make one big picture screen.

Content Storage Memory : 16GB. Installation : Free Standing with solid casters

Contents uploading : Mobile phone, PC, USB  
Control contents by mobile phone individually

Networking remote control contents on large number of screens at real time by server in office.

### Advantages

Fast ROI by AD fees & increasing revenue with high eye-catches

Replace messy unclean printed posters with beautiful video digital menu board / signage displaying on big LED screen W 960mm (37.8") x H 1,440mm (56.7")

Manage various contents (updated menu, event, happy hour, new menu promotion, etc) on large number of screens at real time by server in office.

Able to control contents on screen by Mobile phone (Android / Iphone) or USB individually.

Displays nice picture with high brightness 6,000 nits including high end environmental automatic light sensor, narrow pitch 3.3mm even under strong direct sunlight. Excellent mobility for free standing with solid casters.

Narrow Pitch 3.3mm displays nice clear contents on led screen. Integrated All in One. User friendly  
All weather proof including water proof IP65, Vandal proof. Slim neat chassis thickness 140mm (5.5") only  
Customized design, screen size available. Warranty 2 years

**Demands :** Drive Thru in Fast food restaurants (Hamburger, Pizza, Sandwich, Taco, etc), Various Stores, Retail Supermarket, Grocery chain stores, Stadium, Theater, Theme park, Event & more

<b>LED</b>	Pixel Pitch	3.3mm	<b>LED</b>	Power supply	Free Voltage 100V~250V
	Pixel Configuration	3in1 SMD Chip		Working Voltage	DC 5V
	Screen size	W 960mm (37.8") x H 1,440mm (56.7")		Power Consumption	Max 1.5KW Average 0.5KW
	Module size	320mm (12.6") x 160mm (6.3")		Working Temperature	-30°C ~ +50°C
	Resolution	291 x 436		Ambient Humidity	10%-90%RH
	Brightness	6,000 nits		Ingress Protection	P65 Water proof
	Visual Angle	Horizontal:160°;Vertical:160°		Weather protection	All weather proof
	Storage capacity	16GB			
	Processing Depth	16 bits			
	Color number	16 M/28S		<b>CHASSIS</b>	Size
Data refresh rate	1920Hz	Weight	137KGS		
Pixel density	90000 dots /m2	Material	Solid powder sprayed Steel sheet		
Scan	1/8				
Display Mode	Asynchronous with video source				
Data Communication	VGA Mapped/NTSC/PAL,JPG,BMP,AVI,WMV,RM etc				
Lifespan	100,000 hours				
LED Failure Rate	≤0.00001(Led display line standard<0.0001)				
					<b>30</b>