



### FEATURES

LED Screen : Ultra thin 9mm/0.35" transparent LED screen

Screen : W 1,000mm/39.4" x H 2,000mm/78.8"

Chassis : W 1,000mm/39.4" x H 2,000mm/78.8" x T edge 9mm/0.35"

Pitch 3.9mm x 7.8mm Transparency rate 75%

Various Brightness : 800 nits for indoor, 2,000 nits (indoor/ outdoor), 6,000 nits (outdoor)

No bezel. Ultra thin 9mm/0.35" (screen edge).

Power box in center W 63mm/2.48" x H 75mm/2.95"

Content Storage 16GB Light Weight 16kgs

Contents uploading : WIFI (including Mobile phone), RJ45, HDMI, USB

Connectivity : RJ45, HDMI, USB (compact controller TB2)

Control contents by mobile phone at place.

Networking remote control contents on large number of screens in real time in office.

### ADVANTAGES

No need to replace poster.

**Fast ROI** by saving cost for big poster, logistics, AD fees & increasing revenue.

Displays various brands of poster, event sale, information in real time.

Beautiful picture on see thru led screen which grabs high eye catches.

No block rear view / See thru LED screen..

High Transparency rate 75%..

Super light 16kgs only. Ultra thin 9mm/0.35" only. Neat Gorgeous.

Turn on power, picture is displayed automatically !

User Friendly !

Control contents on screen by Mobile phone (Android / Iphone) or USB.

Networking remote control contents on large number of screens in real time by cloud in office.

Long life span over 15 years.

### DEMANDS

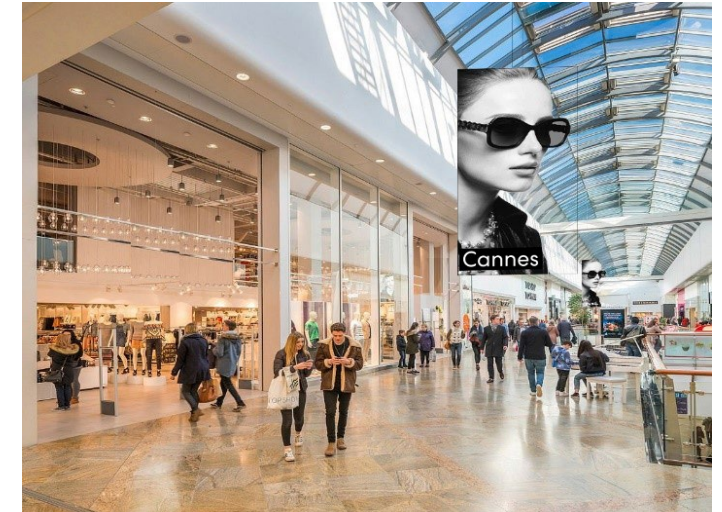
Sunglass Optical store, Supermarket/Grocery chain store, Show window in Various Retail chain stores, Shopping mall Department store & More.



# DigiPOS

## Digital Poster Transparent ultra thin LED Screen

Poster image & content changes in real time.



Screen size	W 1,000mm/39.4" x H 2,000mm/78.8" x T 9mm/0.35"
Pixel Pitch	3.9mm x 7.8mm
LED Type	3 in 1 SMD Chip
Brightness	800 nits (indoor), 2,000 nits (indoor/outdoor), 6,000 nits (outdoor)
Transparency	75%
Resolution	256 x 256
Pixel/m²	65536
View angle	160°
Weight	16KGS
IP (Front/Rear)	IP65/IP31
Gray Scale	16Bit
Refresh Rate	1920-3840HZ
Power Consumption (MAX / AVR)	1.6KW / 0.5KW
Input voltage	110-240V AC± 10%
Working Temperature	-20℃ ～ 45℃
Operating Humidity	10-90%
Chassis	W 1,000mm/39.4" x H 2,000mm/78.8" x T edge 9mm/0.35" (power box in center W 63mm/2.48" x H 75mm/2.95")